

ANT Content Developer Kit

...delivering tomorrow's multimedia services, today

When rolling out multimedia services, operators are challenged with the need to develop a stable, reliable platform whilst at the same time being driven by the consumer to produce compelling and dynamic content.

The ANT Content Developer Kit complements the power and flexibility of the ANT Galio Suite with a comprehensive set of tools, guides and tutorials. Available for both Windows and Linux systems, it enables rapid development of applications, content and services for deployment on a target platform, delivering significant time-to-market advantages and cost savings.



ANT Galio Suite

The ANT Galio Suite has been developed to provide network operators, content providers and device manufacturers with a state of the art environment for the development and delivery of multimedia services, across all consumer devices.

The ANT Galio Suite is built on a powerful platform consisting of a standards based, TV optimised, browser and presentation engine integrated with a unique middleware client, which together support a wide range of HTML based applications and services across a variety of consumer and media devices in all TV environments.

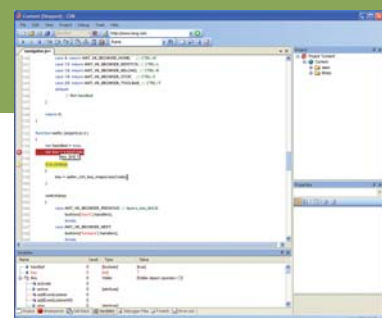
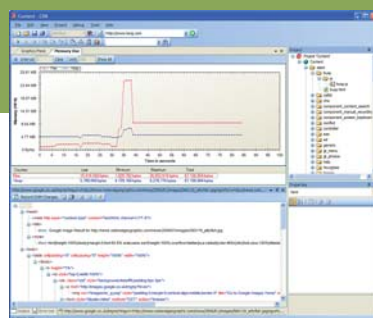
■ THE CHALLENGES

- Reduce content and application development time
- Simplify product design and development
- Test target systems performance during development
- Ensure solutions will behave as intended when deployed
- View content on a target device as it's written

■ THE SOLUTION

- Use powerful debug features to pinpoint errors in real time
- View the document tree and trace the application hierarchy
- Chart memory usage in real time
- Run and control applications on target systems
- Set conditional break points to capture intermittent events
- Ignore non-critical stops in scripts
- Load applications from remote locations
- Emulate User-interaction with a virtual remote control or keyboard

'The power of expression requires depth of knowledge and flawless execution'.



■ WHAT IS THE ANT CONTENT DEVELOPER KIT?

The ANT Content Developer Kit (CDK) is a comprehensive set of tools, guides and tutorials which provides content (multimedia services) developers with the means to test and debug their content either on the target device, or on a remote system. The ANT CDK connects to the ANT Galio Browser running either on a PC, or a target device, through the ANT Galio Engineering Interface (AGEI). AGEI comprises a suite of protocols specifically designed for debugging of applications both on and off target.



■ FEATURES OVERVIEW

JavaScript Debug Features

- Debugger automatically stops and highlights syntax or runtime errors when running JavaScript
- JavaScript code complete
- Create breakpoints, manually break execution, ignore or set conditional break points in code and track events
- Step through code at breakpoints – step into, step over, step out or continue
- Set system variable watches, see what functions have been called, or show variables at breakpoints
- Debug content running locally or remotely on the target device

Document Tree Viewer

- Display currently loaded DOM tree
- Expand or collapse elements and search objects
- Display variables, CSS properties and HTML attributes for each node, run XPath queries
- Log debug messages from DOM Debug object
- View frames and iFrames

Applications (WAFER) Tree Viewer

- View loaded WAFERS in current application
- Load additional applications in project
- Unload, reload or kill applications in project
- Show or Hide applications in active applications list

Displayed Objects

- JavaScript Object Inspector allows objects to be inspected from variables view and quick watch window
- Magnifier Tool, useful for checking sizes, positions and colours
- The CSS Property View allows values to be changed
- View Style Cascades to see what style has been applied to individual elements

Project Management

- Import source files from local or remote sources
- Overwrite or refresh local files
- Publish local files to a remote site
- External Tool launching

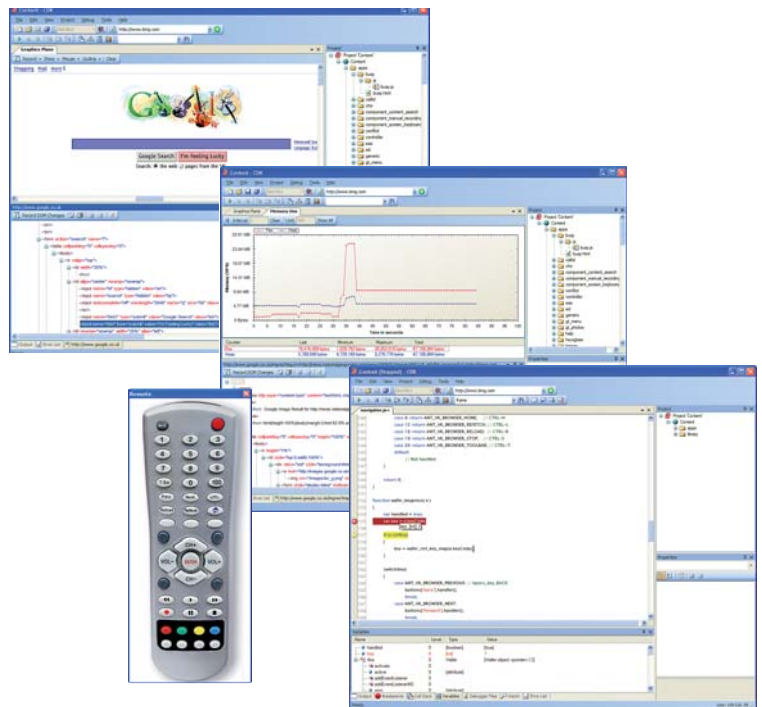
Virtual Remote Controller

- Simulate data entry and User interaction with a virtual remote controller
- Customise the button layout or functionality

Chart Memory Usage

- Show dynamic use of heap and flex memory during application execution
- Zoom into chart data between specified data points

For further information, please visit www.antplc.com or email info@antplc.com



ANT Software Limited

Cambridge Business Park, Cowley Road, Cambridge, CB4 0WZ, United Kingdom
T +44 (0)1223 716400 F +44 (0)1223 716401 info@antplc.com www.antplc.com